



HO Scale Structure Kit

24-SEVEN QUICK MART

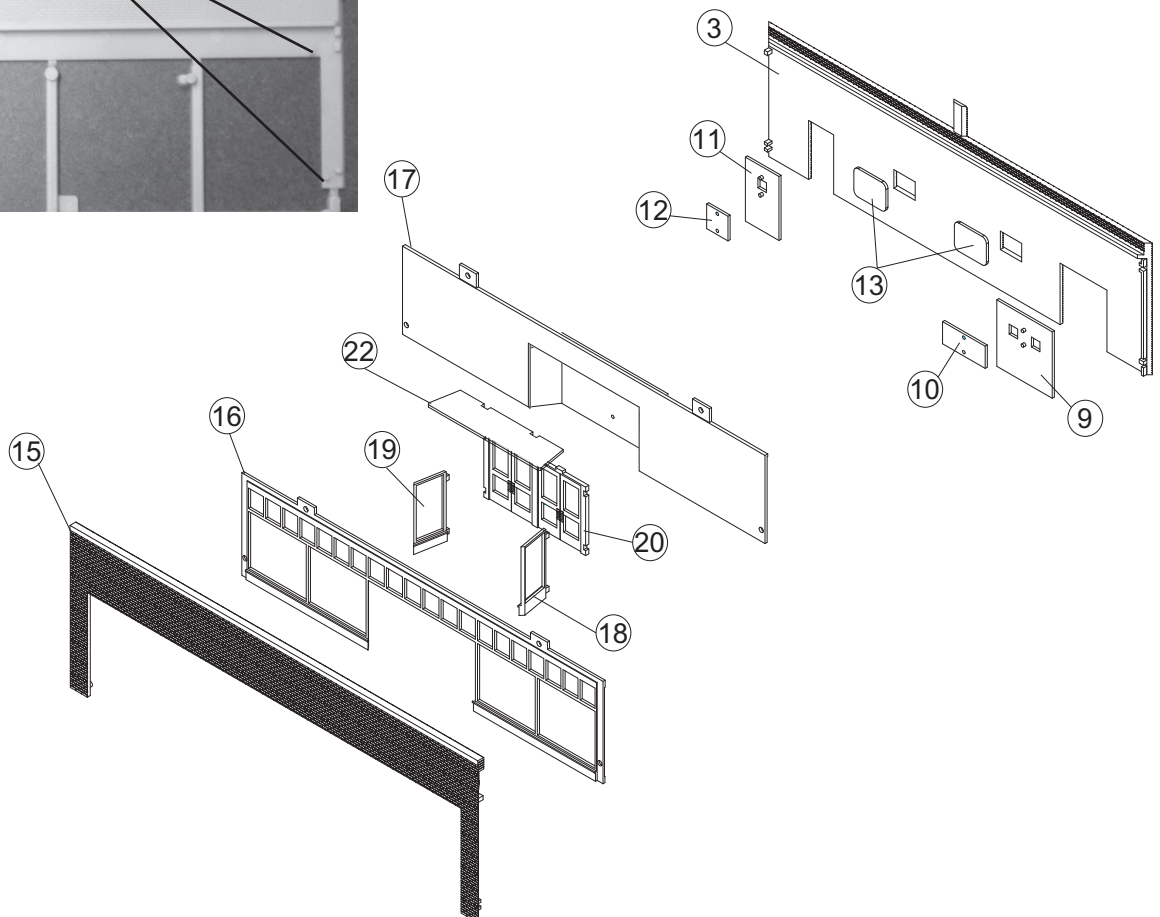
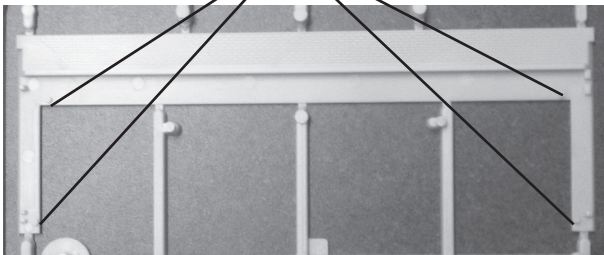
933-3477

Thanks for purchasing this Cornerstone kit. All parts are styrene, so use compatible glue and paint to complete your model. Please take a few minutes to read the instructions and study the drawings before starting construction.

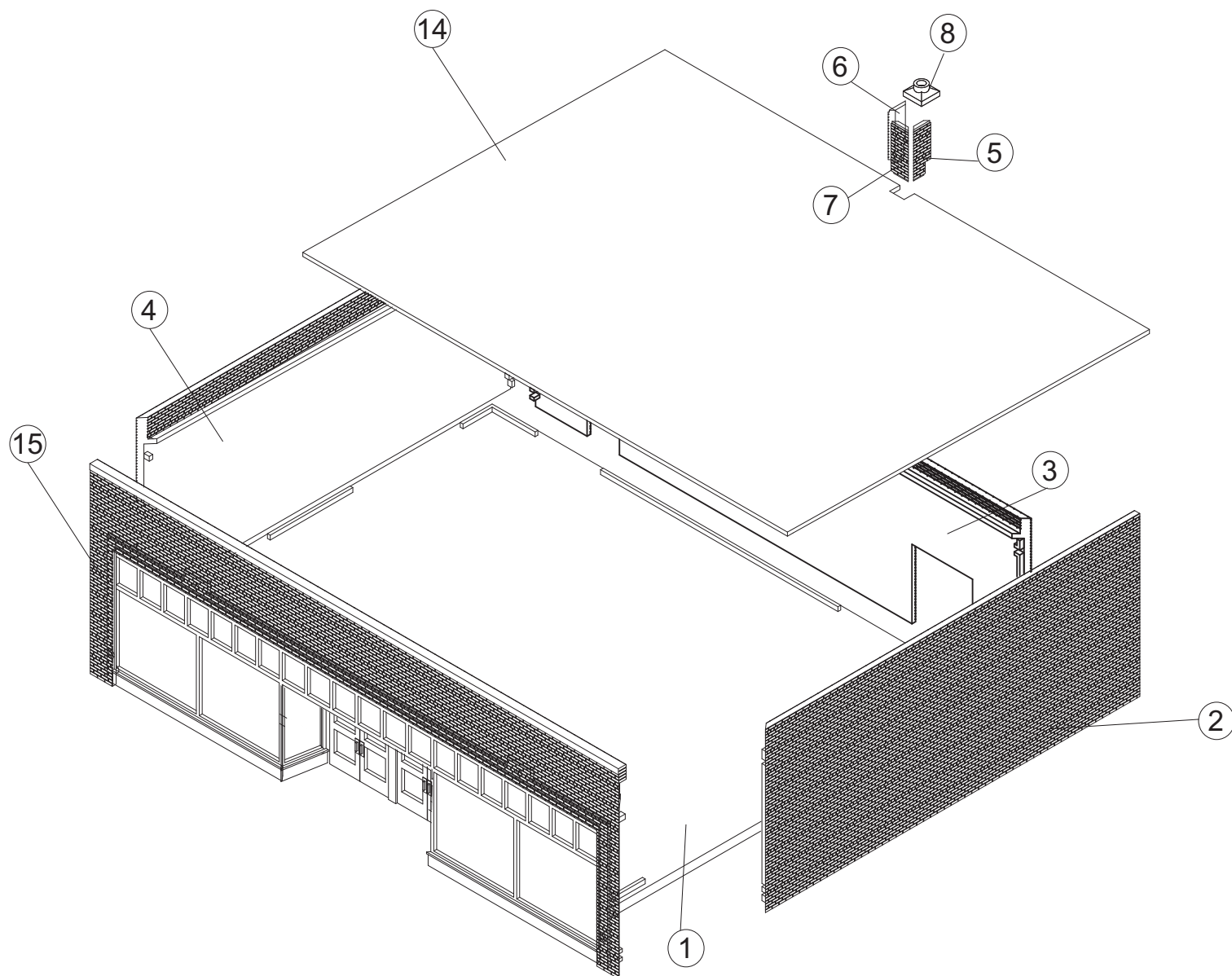
Tracing their ancestry to the trading post and general store, today's convenience stores have evolved into a highly specialized business and an American pop culture icon. The idea really began as cities grew and new residential areas were built farther from the central business district. Lugging home heavy bags of groceries wasn't easy, so entrepreneurs added a tiny storefront to their home or small business, stayed open nights and weekends, and offered a limited number of staples (usually at higher prices) as a convenience to local customers. Convenience stores made the move to the suburbs in the 1950s and 60s with much of the population and quickly evolved into highly specialized retailers. While the core ideas of a small space, limited selection and fast service remained the majority of customers were now arriving in cars. Locations with room for parking and easy street access were favorites, and many owners also began selling gasoline. Brighter colors and more lights were also used to attract drivers. Consideration was also given to floor plans and traffic flow to bring customers inside quickly, but slow them down as they passed attractive merchandise displays en route to the cash register. Despite competition from look-alike oil company "convenience centers" and big box retailers, traditional convenience stores are still very much a part of the urban landscape, and still evolving to meet the needs of 21st century customers. With appropriate vehicles and figures, your new model is right at home in contemporary scenes. See your local hobby shop, the current Walther's HO Model Railroad Reference Book or visit us online at walthers.com for additional ideas and accessories.

1. Glue Window Glass (12, 10) to Door Frames (11, 9). Glue Block Window Glass (13) to Back Wall. Glue Door Assemblies (11, 9) to Back Wall.
2. Cut four pins from the rear of the Front Wall (15) as shown in the photo below. Glue the Front Wall Window Frame (16) to Front Wall (15). Glue Left Entry Window (19), Door Frame (20), Right Entry Window (18) and Entry Roof (22) together. Glue to Front Window/Front Wall Assembly (15, 16)
3. Glue Front Window Glass (17) to Front Window Frame Assembly (16, 18, 19, 20, 22).

Remove Pins on Back of Front Wall



4. Glue four Walls (15, 2, 3, 4) to Base (1), using raised ridges as a guide.
5. If used, trim printed interior photo to fit, and glue in place behind Front Window using white glue.
6. Roof (14) can be set in place to add additional interior details or lighting if desired (both sold separately) or glued in place.
7. Glue Chimney Sides (5, 6, 7) together and to Back Wall (3). Glue Chimney Cap (8) in place as shown.



SIGN

To mount signs, simply cut the desired name and using a small drop of white glue on the back, glue in place.