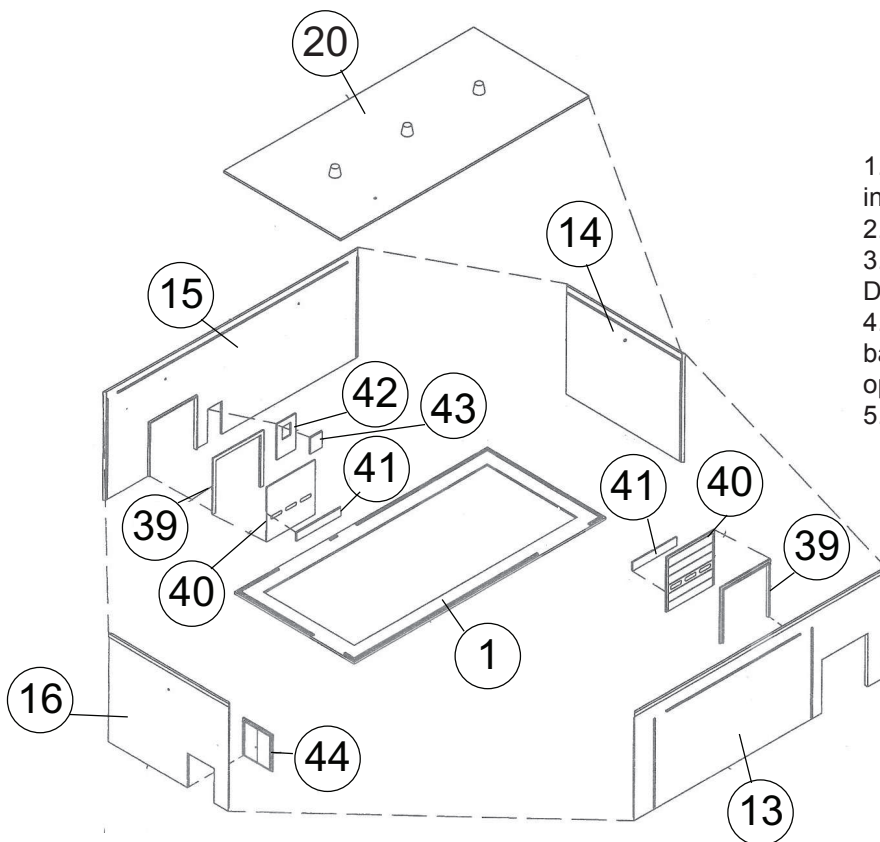




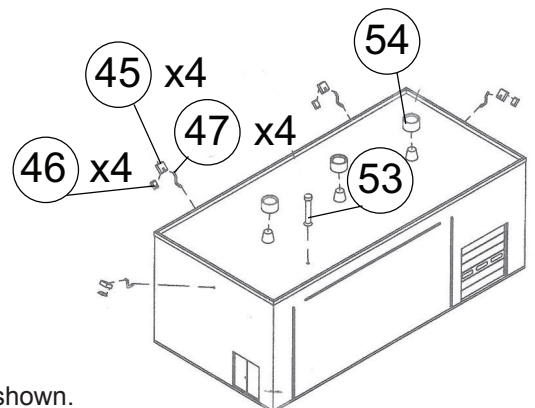
HO Structure Kit INTERNATIONAL® TRUCK DEALERSHIP 933-4025

Thanks for purchasing this Cornerstone Series® kit. Please read all instructions and study the drawings before starting. All parts are styrene plastic, so use compatible glue. If you wish to decorate your model, use paints for plastic models.

Tracing its origins to the 1830s as a manufacturer of farm machinery, International Harvester Company (IHC) produced its first light trucks in 1907. These self-propelled "Auto Wagons," a forerunner of today's pickup, were tough and simple, perfect for hauling chores on rough roads in rural areas. Over the next several years, IHC continued to expand and update its truck line, focusing on the specialized hauling needs of its growing customer base. This soon took International down a different route from most manufacturers, designing and building trucks for specific jobs, rather than fitting basic models with various body types. Light truck production continued through 1975 and by the 1980s, the company chose to focus solely on building trucks and engines, adopting the name Navistar International after selling off its farm machinery and other lines. Today International remains one of the biggest suppliers of trucks, building a wide range of on and off-road models, as well as special purpose vehicles including school buses and military equipment. Providing a full range of sales and service, this structure is perfect along any busy industrial highway. Walthers SceneMaster line (manufacturer #949) includes a number of licensed International truck replicas for the finishing touch; see your local hobby shop or Walthers HO Reference Book and waltherscornerstone.com for additional figures and scenery materials to finish your model.

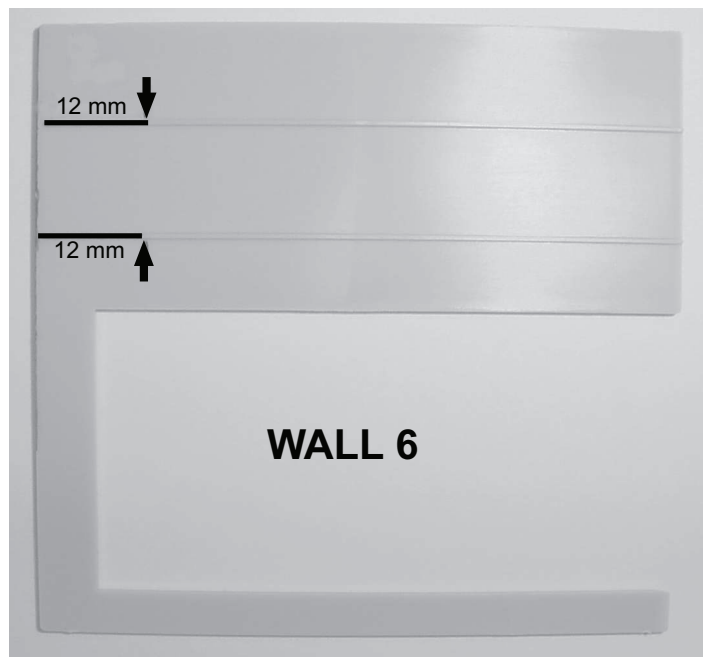


1. Glue the door frames (39) into the openings in the walls (13, 15).
2. Glue doors (40, 42, 44) to walls (13, 15, 16).
3. Glue window "glass" (41, 43) to back of Doors (42, 40)
4. Glue walls (13, 14, 15, 16) together and to base (1) making sure the doors line up with opening in edges on base.
5. Glue roof (20) in place.

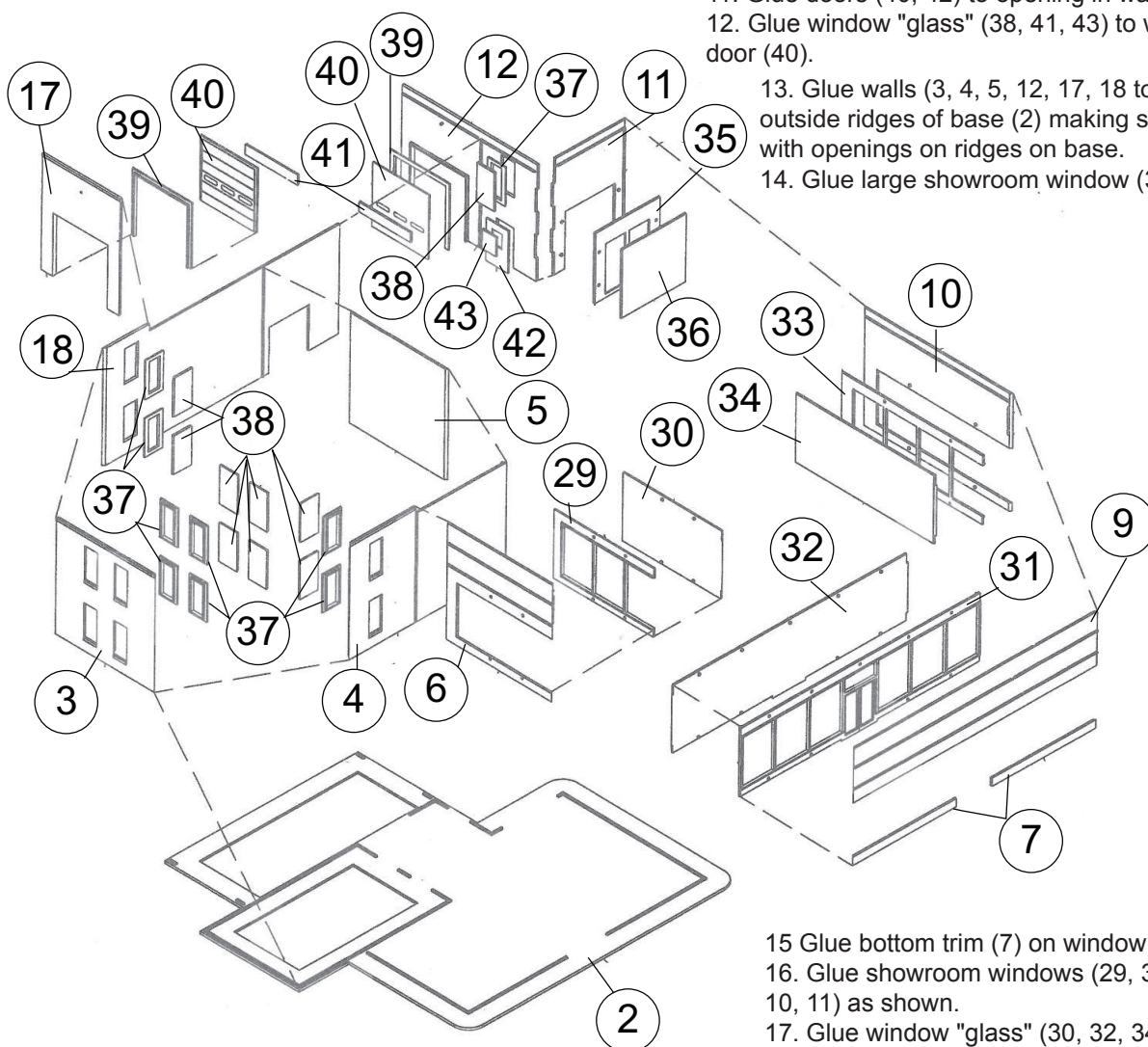


6. Glue vents (53, 54) onto roof (20).
7. Glue light fixtures (45, 46, 47) together then to holes in walls as shown.

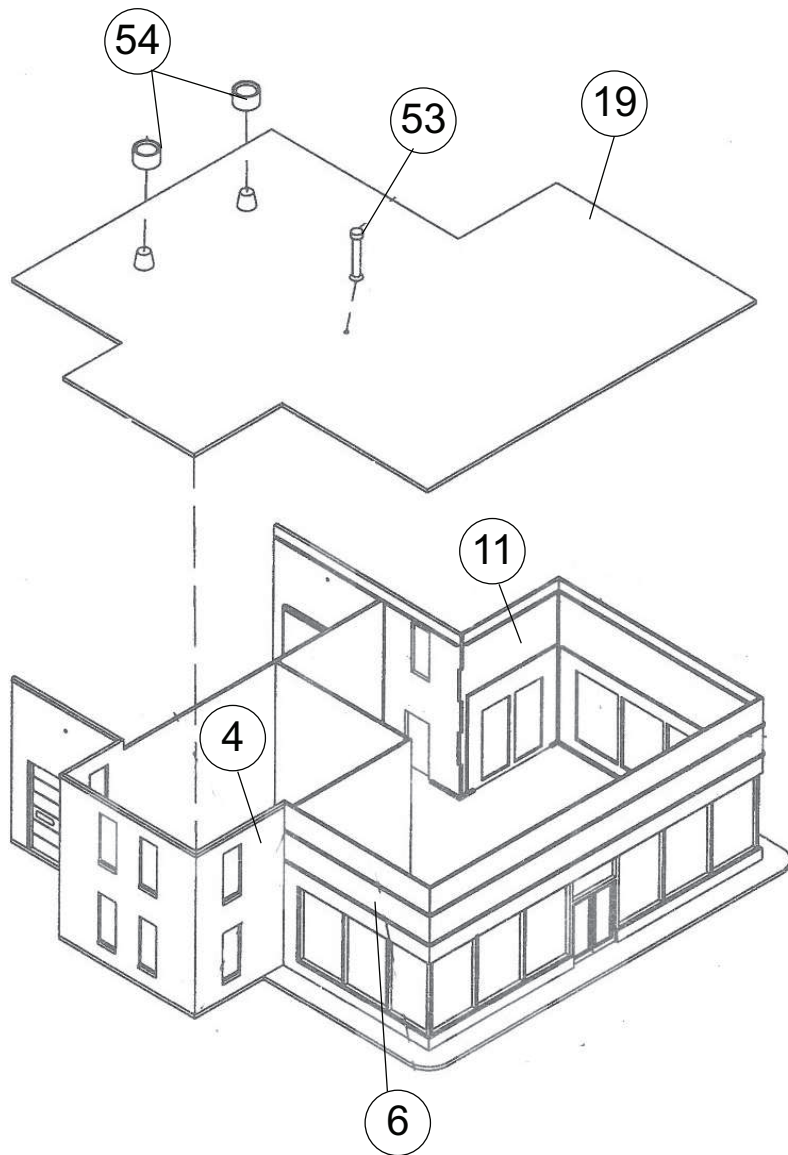
8. NOTE: If you wish to add the decorative quarter-round trim (steps 22-23), remove 12mm of the raised ribs on walls 6 and 11 as shown now. Carefully scrape off the ribs using a chisel-type blade in your hobby knife.



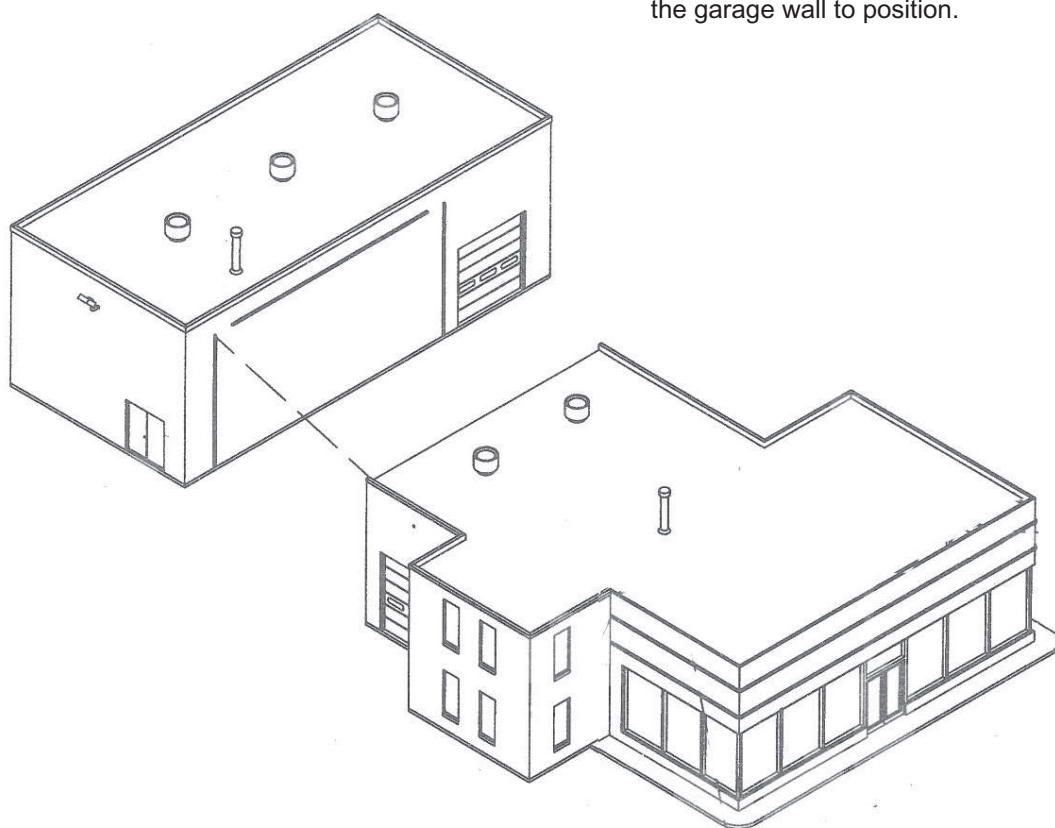
9. Glue office windows (37) to office walls (3, 4, 12, 18).
10. Glue door frames (39) to the openings in walls (12, 17).
11. Glue doors (40, 42) to opening in walls (12, 17) as shown.
12. Glue window "glass" (38, 41, 43) to windows (37, 42) and door (40).
13. Glue walls (3, 4, 5, 12, 17, 18 together and to the outside ridges of base (2) making sure the doors line up with openings on ridges on base.
14. Glue large showroom window (31) to wall (9).



15. Glue bottom trim (7) on window (31).
16. Glue showroom windows (29, 33, 35) to walls (6, 10, 11) as shown.
17. Glue window "glass" (30, 32, 34, 36) to windows (29, 31, 33, 35) using pins to position properly.
18. Glue completed wall assemblies together and to the outside of the ridges on the base and wall (4).

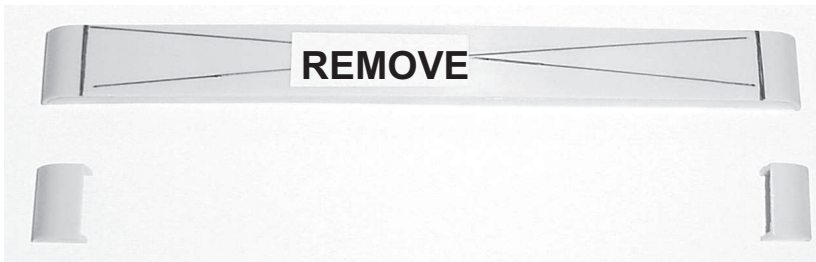
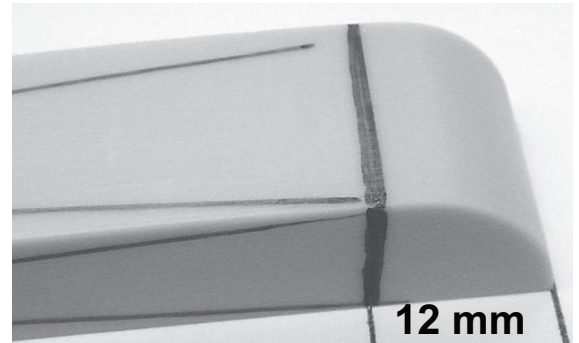


19. Glue roof (19) to structure. (Option: just set roof into place with no glue to be able to switch out interior details once on layout)
20. Glue vents (53, 54) to roof (19).
21. Glue completed structure to the completed garage, using the ridges on the garage wall to position.

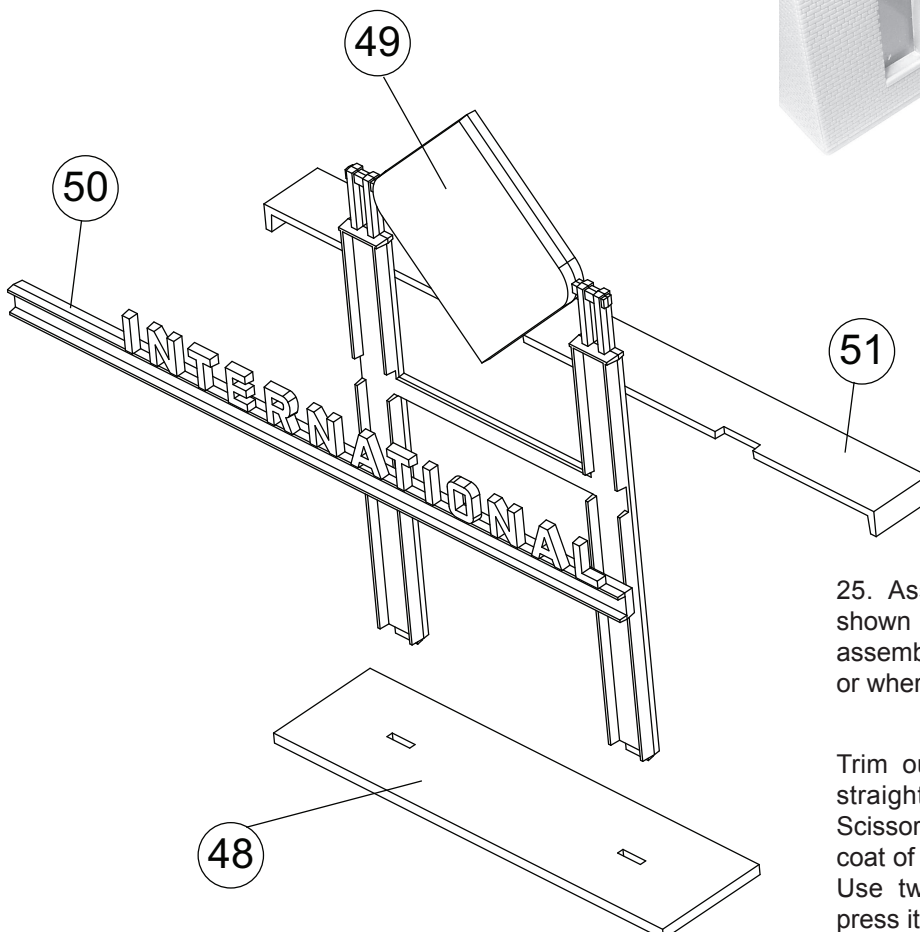


22. To make the quarter round decorative trim, start by gluing parts 23 and 24 together. (Do Not use the locating ridge on part 23. Glue 24 flush with the bottom edge of part 23).

23. Measure in 12mm from each edge of the assembly from the previous step. Cut squarely through each end. the center section will be discarded. Use a file or sand paper to square the cut edges. Test fit the quarter rounds on walls



24. Glue the Decorative Trim parts to walls 4 & 6, and 11 & 12. Make certain the Trim is centered between the ribs, faces the correct direction, and is "seam side" down for best appearance.



25. Assemble the International sign as shown (48, 49, 50 & 51). Center the Sign assembly in front of the Entrance on Wall 9, or where desired.

Paper Signs

Trim out the paper sign provided with a straightedge and sharp hobby knife. Scissors can also be used. Lightly brush a coat of water based glue over the backside. Use tweezers to position the sign, then press it in place lightly with your finger.