



3/14/2013

PHANTOM PARTS LIST MS2027

| PART # | ITEM | QUANTITY | DESCRIPTION/NOTES |
|--|--------------------------|----------|--------------------------------|
| BRITANNIA CASTINGS 2 packs | | | |
| WP6101 | Anchor | 1 | |
| WP6102 | Cockpit Coaming | 2 | Two Halves |
| WP6103 | Steering Wheel | 1 | |
| WP6104 | Stove Pipe | 1 | |
| WP6105 | Ventilator | 1 | |
| WP6106-A | Running Lights Port | 1 | |
| WP6106-B | Running Lights Starboard | 1 | |
| WP6107 | Fife Rail | 2 | |
| WP6108 | Fife Rail Stanchions | 4 | |
| WP6109 | Winch Bitt | 1 | |
| WP6110 | Mast Cap | 2 | |
| WP6111 | Hawse Pipe Lips | 2 | |
| WP6112 | Cross Bitt | 2 | |
| WP6113 | Pump | 2 | |
| BRASS AND MISCELLANEOUS FITTINGS AND MATERIAL | | | |
| WP0045 | Cleats | 16 | |
| WP0429 | Small Eyebolts | 30 | Brass |
| WP0412 | Belaying Pins | 35 | |
| WP0993 | Nails | 50 | |
| WP0976 | 1/4" Copper Tape | 14 ft | Sheathing below waterline |
| WP0888 | 1/16" x 1/64"x 12" Strip | 1 | Chainplates, pintles, gudgeons |
| WP40242SEC | 0.022" Dia. Wire | 24" | Steel, for strop rings |
| WP40282SEC | 0.014" Dia. Wire | 24" | Steel, for gaskets |
| WP162K-12 | 1/16" x 2" Rod | 1 | Keel Pins - launching ways |
| DEADEYES, BLOCKS, AND OTHER WOOD FITTINGS | | | |
| Note: All deadeyes and blocks are Walnut unless otherwise noted. | | | |
| WP0390 | 3/32" Dia. Deadeyes | 12 | |
| WP0301 | 3/32" Single Blocks | 40 | |
| WP0308 | 1/8" Double Blocks | 14 | |
| WP0346 | 3/16" Triple Blocks | 2 | |

RIGGING LINE

Note: Rigging line is Cotton/Poly mix. Black is for standing rigging. Manila is for running rigging. Stain line for other desired coloring.

| | | |
|--------|-------------------------|--------|
| WP1218 | 0.008" Dia. Black | 10 yds |
| WP1210 | 0.021" Dia. Black | 10 yds |
| WP1241 | 0.008" Dia. Manila Hemp | 15 yds |

WOOD DOWELS

Note: All dowels are Beech unless otherwise noted. Dowels are supplied in lengths as noted. Cut to length as required.

| | | | |
|-----------|-------------|---|-------------------------|
| WP5100-24 | 5/64" x 12" | 2 | Topmasts & gaffs |
| WP5101-24 | 1/8" x 6" | 1 | Main boom |
| WP5102-24 | 5/32" x 12" | 2 | Fore & main lower masts |

WOOD STRIPS, SHEETS, AND BLOCKS

Note: All wood is Basswood or Limewood (European Basswood) unless otherwise noted. Wood strips, sheets, and blocks are supplied in lengths as noted. Cut to length as required.

STRIPS

| | | | |
|-----------|---------------------|----|--|
| WP3600-24 | 1/32"x 1/32" x 12" | 1 | Window frame |
| WP3603-24 | 1/32" x 3/32" x 12" | 4 | Cap rails, covering boards |
| WP3618-24 | 1/16"x 1/16" x 12" | 1 | Bulwark stanchions |
| WP3624-24 | 1/16" x 1/2" x 12" | 1 | Rudder, misc. |
| WP3631-24 | 1/8" x 1/8" x 12" | 18 | Launching ways, bowsprit Keel, Sternpost |
| WP3637-24 | 1/4" x 1/2" x 12" | 1 | Wheelbox, companion, skylight, misc. |
| WP3657-24 | 5/16" x 1/2" x 12" | 1 | Companionway, misc. |

BLOCKS

| | | |
|----------|------------------|---|
| WP2027HU | Wood Carved Hull | 1 |
|----------|------------------|---|

LASER-CUT WOOD PARTS

Note: All laser-cut wood is basswood unless otherwise noted.

| | | | |
|-----------|------------------|---|----------------------|
| WP0334 | Grating strips | 2 | Cockpit grating |
| WP0377-24 | Scribed Planking | 1 | (1 - 9" OR 2 - 6") |

PLANS AND INSTRUCTIONS

| | | | |
|------------|-----------------------------|---|--------------------------------|
| WP2027MB | Instruction Manual | 1 | |
| WP2027-HT | Hull Template | 1 | |
| WPPL2027-A | Plan, Sheet 1 of 3 | 1 | 1. Hull 2. Rigging |
| WPPL2027-B | Plan, Sheet 2 of 3 | 1 | Rigging simplification details |
| WPPL2027-C | Plan, Sheet 3 of 3 | 1 | |
| WP2027-I | Launching Ways Instructions | 1 | |
| WPPL2027 | Parts List | | |

Phantom Launching Ways

12 pieces of 1/8" square Basswood stock are supplied for all of the necessary wooden parts in the launching ways.

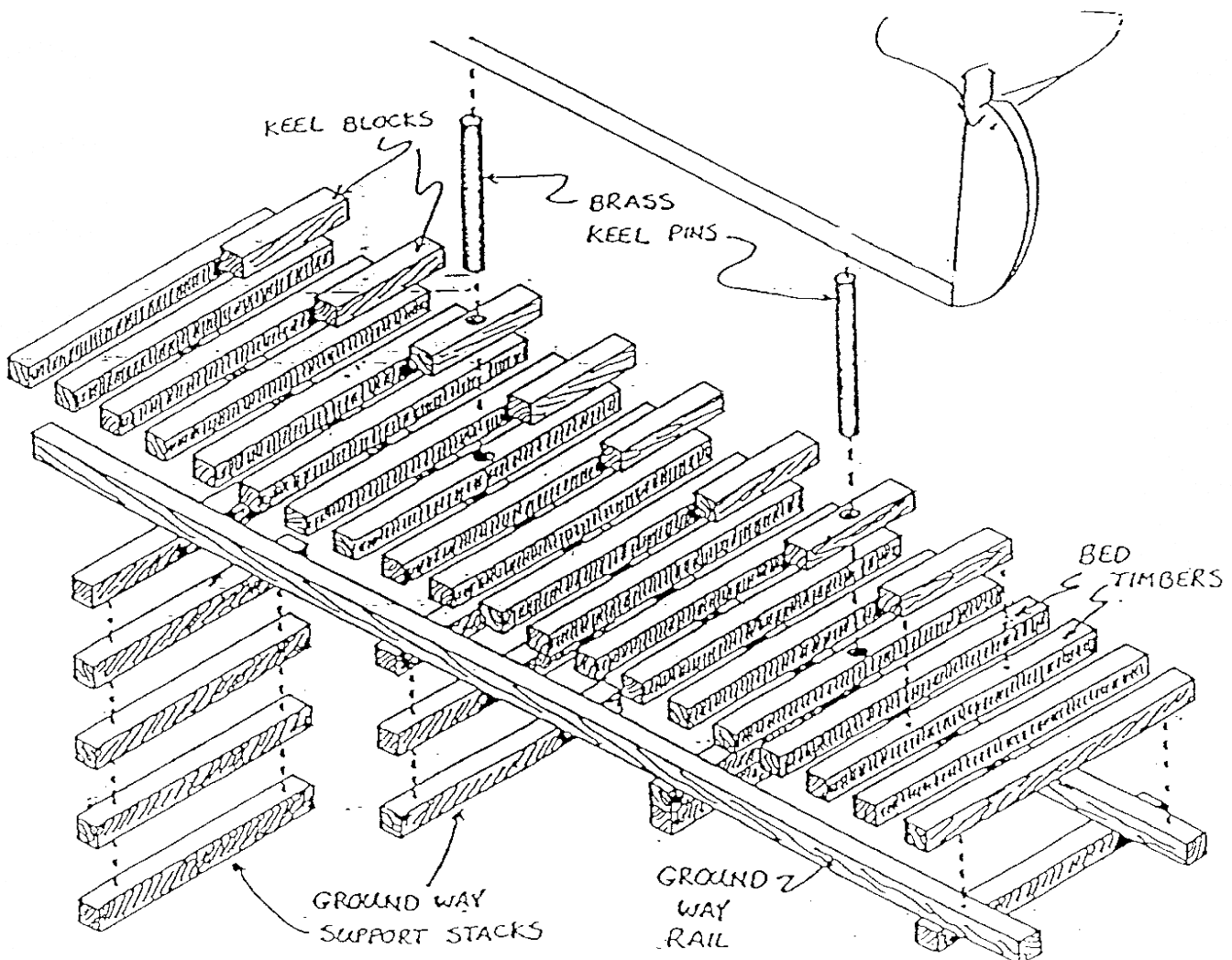
The pieces should be cut into the following finished sizes.

1/ Two inclined rails are needed, each is 11" long.

2/ Thirty five supports and timbers are needed, each is 3" long.

3/ Ten keel blocks and props are needed, each is 1" long.

4/ A 2" piece of 1/16" brass rod is supplied for the keel pins, Cut the rod in half.



Assembly Instructions for Launching Ways

1/ Assemble the 4 ground way supports using 11 pieces of 1/8 x 1/8 x 3" basswood. The first support is made from a single piece of wood, the second from two pieces glued together, the third from three and the fourth from five.

2/ Set the groundway supports on a workboard so that they are parallel to each other. Lay the inclined ground way rails on top of the supports making sure that they are evenly spaced.

3/ When satisfied with the position glue them together.

4/ Glue 20 1/8 x 1/8 x 3" bed timber pieces to the top of the rails....make sure they're square and evenly spaced.

5/ Starting at the fourth or fifth bed timber from the bow end of the ways glue a 1" long keel block on every other timber.....use 8 to 10 of these.

6/ Position the model on the ways so that its centered. Mark the location for the brass keel pins on the on the model and the tops of the keel blocks that you're using.

7/ Drill holes for the pins in the keel blocks and the keel of the hull.

8/ Insert and glue the brass pins into the hull of the model. Glue the other end into the keel blocks.

9/ Finally glue several bilge supports to the model and the bed timbers....they should be at approximately a 45 degree angle to the ways.